

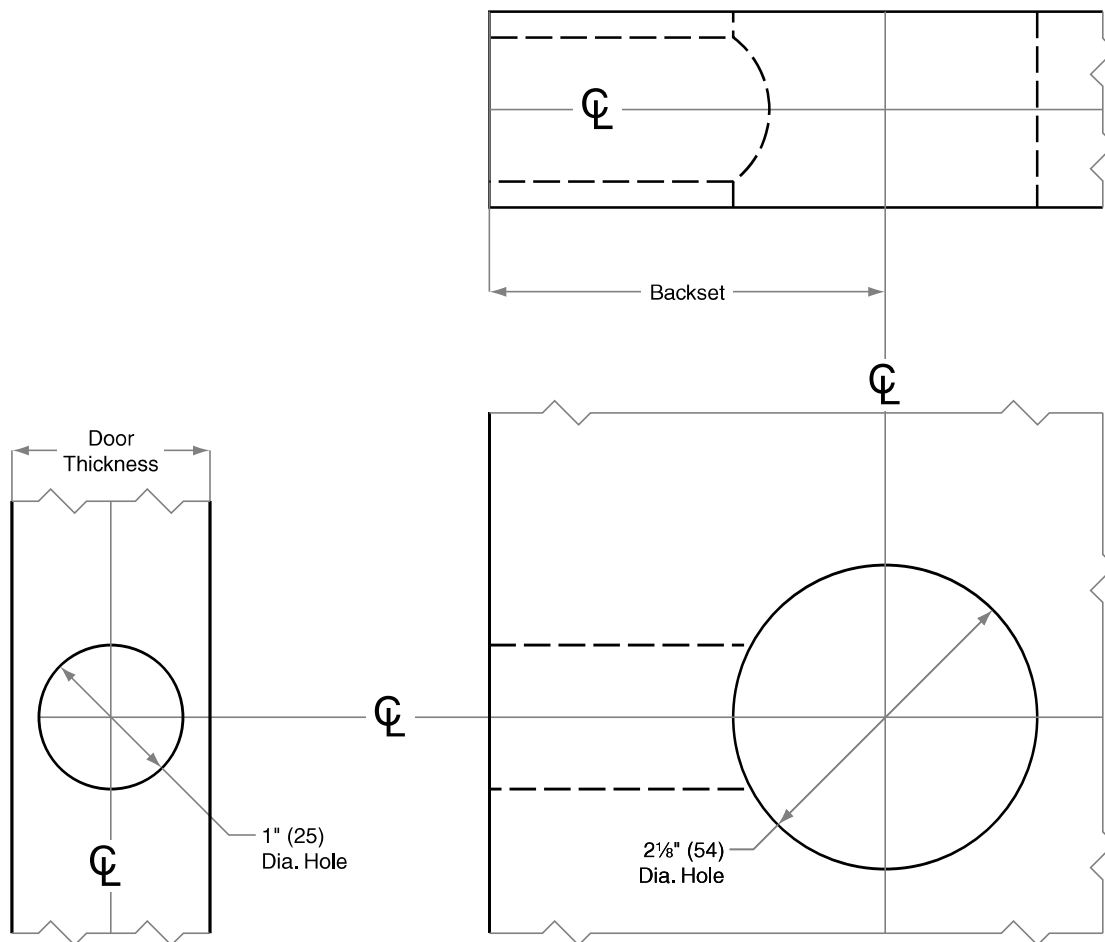


BE-Series

Models BE365, BE367, BE369, BE479, BE468, BE469, BE489

Door Type: Wood or Composite, Flat
 Door Thickness: 1 $\frac{1}{8}$ " (35 mm)–1 $\frac{3}{4}$ " (44 mm)
 Faceplate: Circular Drive-In
 Backsets: 2 $\frac{3}{8}$ " (60 mm), 2 $\frac{3}{4}$ " (70 mm)

Standard backset in bold.



Dimensions shown in parentheses () are in millimeters.

DRAWING IS NOT TO SCALE!

Customer service: 888-805-9837

We can help you find the correct guide for your product and application!

Door preparation template

RB104